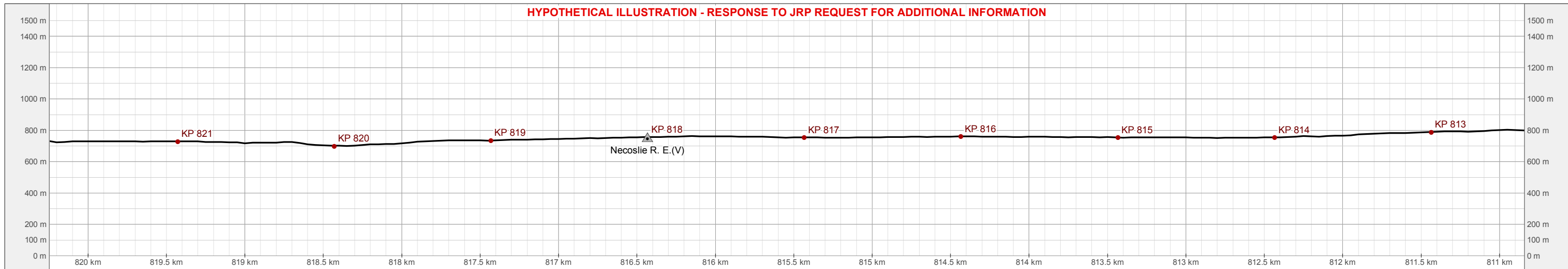


HYPOTHETICAL ILLUSTRATION - RESPONSE TO JRP REQUEST FOR ADDITIONAL INFORMATION



Y Axis Values Are Elevation in Metres. X Axis Values Are Horizontal Kilometres, Increasing from East to West.

PIPELINE ROUTE PROFILE

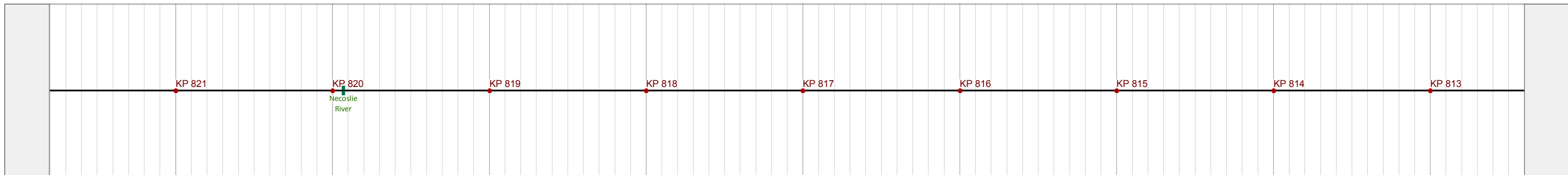
■ Pump Station and Valve (P/V) ▲ Valve (V) ● Tunnel Portal ● Slack KP



Y Axis Values Are Cubic Metre (left) and Barrels (right) with 1 Cubic Metre = 6.29 Barrels. KP Values Are Slack Chainage.

MAXIMUM VOLUME RELEASE WITHIN EACH KILOMETRE

■ Maximum Volume Release



KP Values Are Slack Chainage. Linear Distances Measured on the Plot Represent Slack Distance.

LINEAR EXTENT OF CONSEQUENCE AREAS

■ Consequence Area Within the 25 m ROW — Route Centreline ● Slack KP

NGP\_B\_FIGMAP\_L\_Version B

**WorleyParsons**  
resources & energy

PREPARED FOR

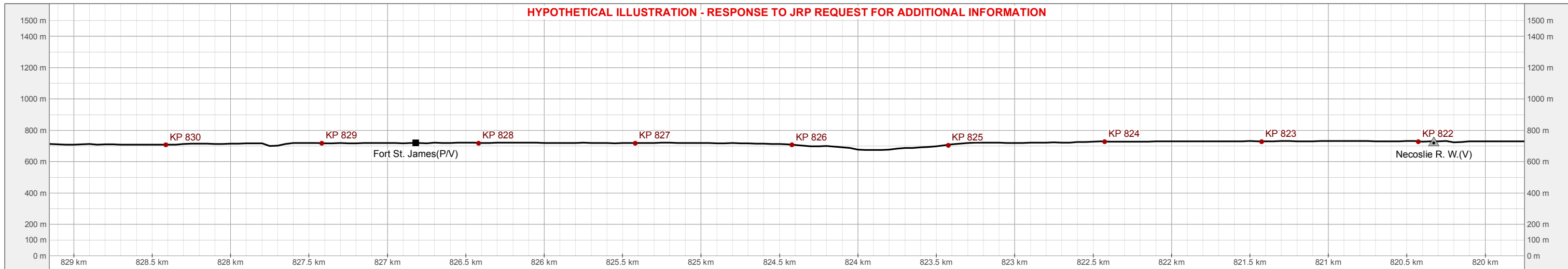
REFERENCES: Profile plot based on Natural Resources Canada's CDED 50k DEM. Linear Extent of Consequence Areas derived from the Consequence Areas provided by the Northern Gateway GEM team within the 25 metre ROW. Volume Release provided by WorleyParsons Calgary. Produced by WorleyParsons Calgary. The information used to create this product is based on the most current data available on the date of issue, and is considered reliable only at the scale at which the data was created and the scale at which the map was published. This drawing is prepared solely for the use of the contractual customer of WorleyParsons Calgary and WorleyParsons assumes no liability to any other party for any representations contained in these drawings. This map must be printed at full scale (100%) in order for the scale to remain correct. Page size is 11X17.

ENBRIDGE NORTHERN GATEWAY PROJECT

**Pipeline Profile and Potential Full-Bore Rupture Releases - KP 813 to KP 821**

SCALE	1:25,000
DATE	18 Mar 2011
FIGURE ID	11-032-092
REVISION	0
FIGURE NO.	<b>B-92</b>

HYPOTHETICAL ILLUSTRATION - RESPONSE TO JRP REQUEST FOR ADDITIONAL INFORMATION



Y Axis Values Are Elevation in Metres. X Axis Values Are Horizontal Kilometres, Increasing from East to West.

PIPELINE ROUTE PROFILE

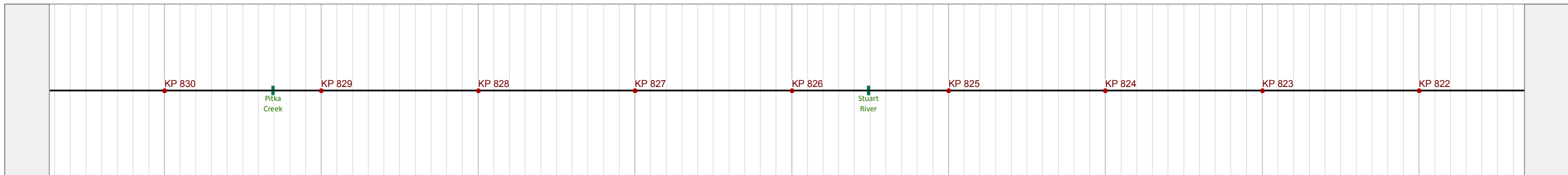
■ Pump Station and Valve (P/V) ▲ Valve (V) ● Tunnel Portal ● Slack KP



Y Axis Values Are Cubic Metre (left) and Barrels (right) with 1 Cubic Metre = 6.29 Barrels. KP Values Are Slack Chainage.

MAXIMUM VOLUME RELEASE WITHIN EACH KILOMETRE

— Maximum Volume Release



KP Values Are Slack Chainage. Linear Distances Measured on the Plot Represent Slack Distance.

LINEAR EXTENT OF CONSEQUENCE AREAS

■ Consequence Area Within the 25 m ROW — Route Centreline ● Slack KP

NGP\_B\_FIGMAP\_L\_Version B



REFERENCES: Profile plot based on Natural Resources Canada's CDED 50k DEM. Linear Extent of Consequence Areas derived from the Consequence Areas provided by the Northern Gateway GEM team within the 25 metre ROW. Volume Release provided by WorleyParsons Calgary. Produced by WorleyParsons Calgary. The information used to create this product is based on the most current data available on the date of issue, and is considered reliable only at the scale at which the data was created and the scale at which the map was published. This drawing is prepared solely for the use of the contractual customer of WorleyParsons Calgary and WorleyParsons assumes no liability to any other party for any representations contained in these drawings. This map must be printed at full scale (100%) in order for the scale to remain correct. Page size is 11X17.

SCALE 1:25,000

DATE 18 Mar 2011

FIGURE ID 11-032-093

REVISION 0

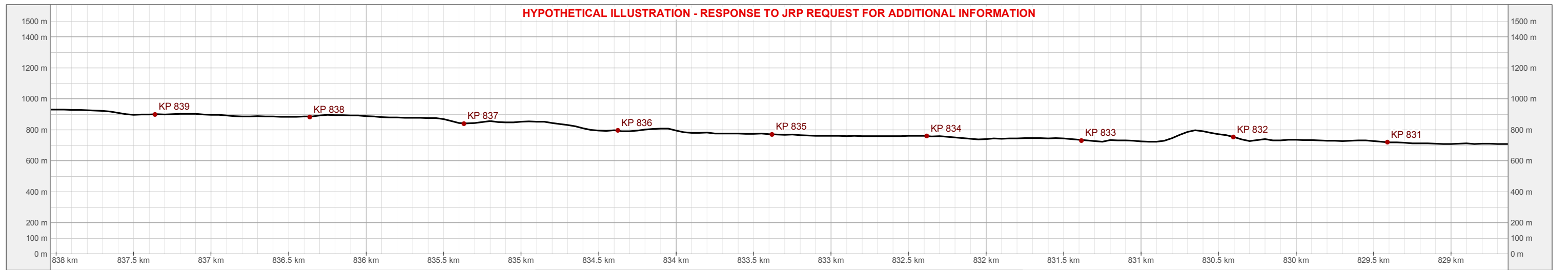
FIGURE NO.

**B-93**

ENBRIDGE NORTHERN GATEWAY PROJECT

**Pipeline Profile and Potential Full-Bore Rupture Releases - KP 822 to KP 830**

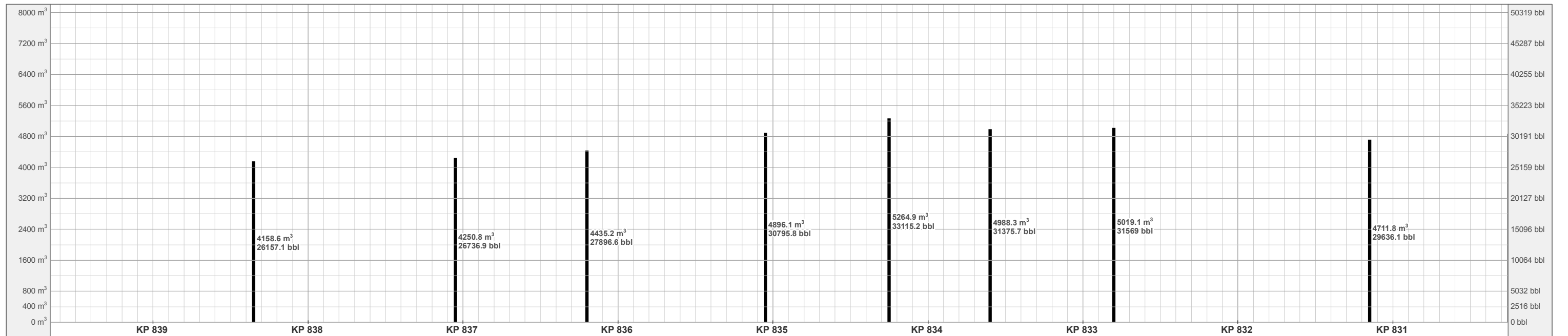




Y Axis Values Are Elevation in Metres. X Axis Values Are Horizontal Kilometres, Increasing from East to West.

**PIPELINE ROUTE PROFILE**

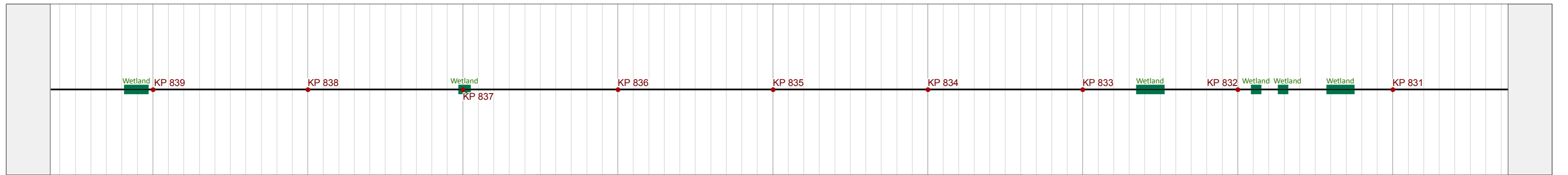
■ Pump Station and Valve (P/V) ▲ Valve (V) ● Tunnel Portal ● Slack KP



Y Axis Values Are Cubic Metre (left) and Barrels (right) with 1 Cubic Metre = 6.29 Barrels. KP Values Are Slack Chainage.

**MAXIMUM VOLUME RELEASE WITHIN EACH KILOMETRE**

— Maximum Volume Release



KP Values Are Slack Chainage. Linear Distances Measured on the Plot Represent Slack Distance.

**LINEAR EXTENT OF CONSEQUENCE AREAS**

■ Consequence Area Within the 25 m ROW — Route Centreline ● Slack KP

NGP\_B\_FIGMAP\_L\_Version B

**WorleyParsons**  
resources & energy

PREPARED FOR

REFERENCES: Profile plot based on Natural Resources Canada's CDED 50k DEM. Linear Extent of Consequence Areas derived from the Consequence Areas provided by the Northern Gateway GEM team within the 25 metre ROW. Volume Release provided by WorleyParsons Calgary. Produced by WorleyParsons Calgary. The information used to create this product is based on the most current data available on the date of issue, and is considered reliable only at the scale at which the data was created and the scale at which the map was published. This drawing is prepared solely for the use of the contractual customer of WorleyParsons Calgary and WorleyParsons assumes no liability to any other party for any representations contained in these drawings. This map must be printed at full scale (100%) in order for the scale to remain correct. Page size is 11X17.

ENBRIDGE NORTHERN GATEWAY PROJECT

**Pipeline Profile and Potential Full-Bore Rupture Releases - KP 831 to KP 839**

SCALE	1:25,000
DATE	18 Mar 2011
FIGURE ID	11-032-094
REVISION	0
FIGURE NO.	<b>B-94</b>