

## Operations and Maintenance Notification - Pipeline Integrity Dig Program

**Applicant** Enbridge Pipelines Inc.

**Notification**

- ☒ Exposure of the pipe surface for the purposes of integrity assessments, repairs or removing an existing section of pipe and putting a new section in its place in areas where there are residences, or where there is a school, hospital, prison, or other institution where people routinely congregate in large groups (more than 50 people), within an emergency planning zone or within 200 m of the proposed activity (whichever is greater). **See attached Figure 1 for an image that identifies the location of residences and institutions within 200 m of the proposed activity.**
- Distance to nearest resident/institution: 45m
- ☐ Ground disturbance using power equipment within 30m of a wetland or water body
- ☐ River ☐ Lake ☐ Creek ☐ Slough ☐ Wetland
- Distance to wetland or water body: \_\_\_\_\_
- Wetland or water bodies will be crossed in accessing the site ☐ Yes ☐ No
- ☐ Unresolved 3rd party concerns (i.e. landowners, tenants, Aboriginal groups, shippers, federal and provincial departments, or other parties who may be affected by the O&M activities) and these concerns relate specifically to the proposed O&M activities.

### 3rd Party Consultation

- ☒ Rural ☐ Urban ☐ Industrial

#### Summary of 3rd Party Consultation:

Enbridge identified two potentially affected landowners. A land agent conducted in-person consultation with the landowner on January 14, 2013 and access landowner on January 7, 2013. No outstanding concerns were identified. The Enbridge Integrity Brochure was also provided to nearby residences as a courtesy notification.

### Activity Detail

Initial activities will include mobilization and site preparation. Following this, excavation and assessment of indications from an in-line inspection (ILI) tool run will be carried out. After assessment, the appropriate repair, such as recoating and sleeving will be made. Upon completion of all activities, the excavation will be backfilled and the worksite restored to preconstruction condition. If working in close proximity or within a wetland/water body, or dewatering is required for the activity, appropriate measures such as installation of aqua dams, construction of berms, or use of pumps will be taken to safely carry out the work.

**Defect Type** ☐ Corrosion ☐ Crack ☒ Dent

### Rationale for Activity

Per the Enbridge Integrity Management Program, in-line inspections are conducted at specific intervals, investigating for defects such as corrosion, dents and cracking. The ILI results are analyzed and defects meeting Enbridge criteria for field assessment require excavation, assessment and the appropriate repair.

### Environmental Details

An environmental assessment has been prepared for this project based on on-site screenings, Environmental Alignment Sheets and other resources. This assessment has identified mitigative measures to be followed in accordance with the Enbridge Environmental Guidelines for Construction. For work taking place within a wetland or water body, a site specific environmental plan will be developed outlining all mitigative measures to be taken, in accordance with the Enbridge Environmental Guidelines for Construction, Operational Statements of the Department of Fisheries and Oceans, and any additional requirements of municipal, provincial and federal authorities.

### Location

Line #	Station:	Upstream Station:
KP 2979.5693		MP 1851.4185
PT SUBDIVISION LT 1 CON 7 EGR NORTH DUMFRIES, REGIONAL MUNICIPALITY OF LLD WATERLOO		Tract 0100-0115.00

### Timing

Earliest Activity Start Date March 21, 2013

Latest Activity Completion Date August 31, 2014

(Activity Dates may change without notification. Please contact On-site Contact Person for up-to-date schedule)

### Relevant Company Manuals and Plans

(on file)

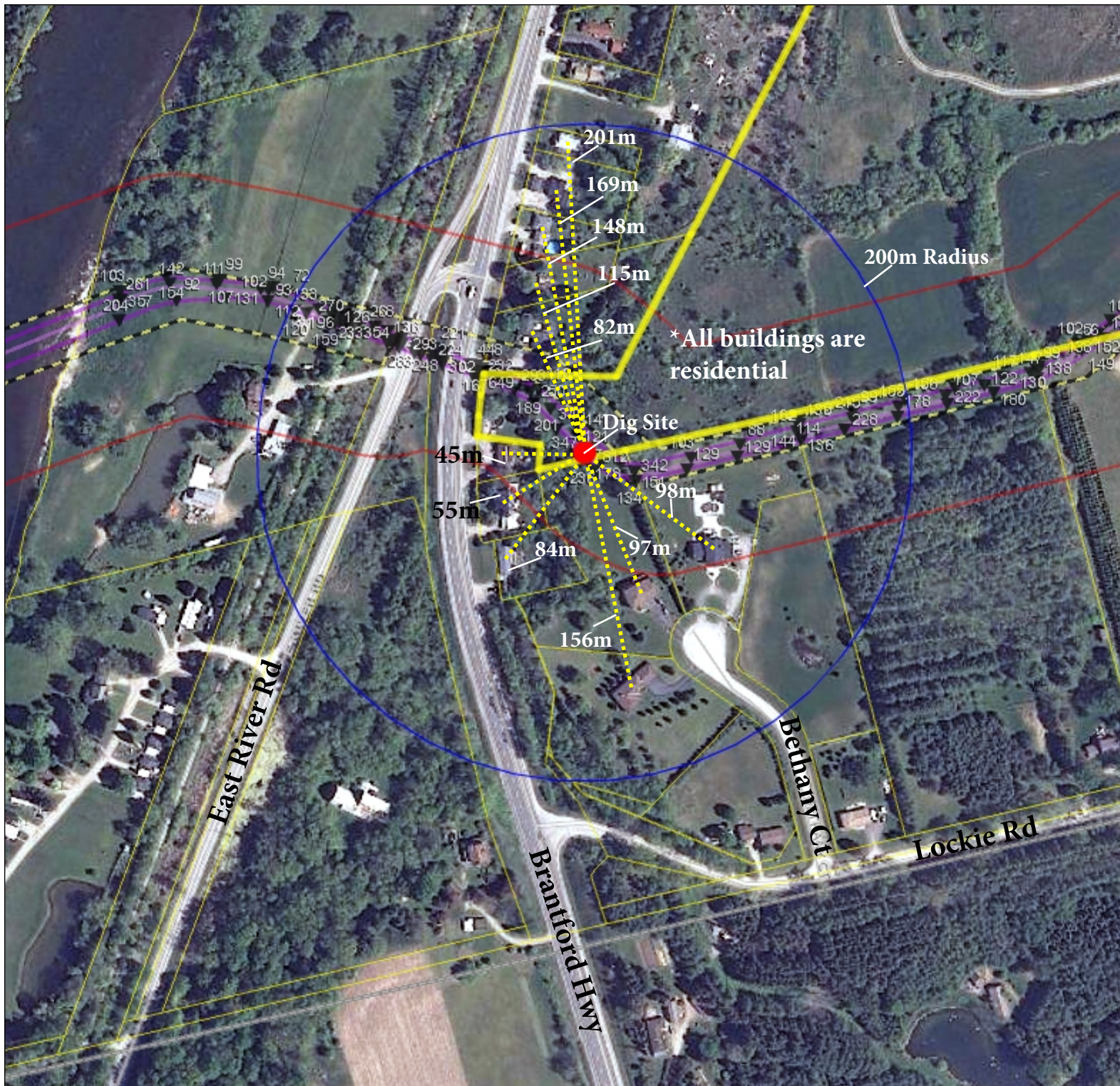
Enbridge Operations & Maintenance Procedures Manuals  
Enbridge Contractor Safety Manual (2013)  
Enbridge Environmental Guidelines for Construction (2012)

### Contact Person

Construction Manager  
Guillermo Solano  
Cell 226-748-9674  
Enbridge Pipelines Inc.  
Mainline Projects, Eastern Canada  
Email [guillermo.solano@enbridge.com](mailto:guillermo.solano@enbridge.com)

Enbridge Regulatory Contact  
Karin Schmidt  
Enbridge Pipelines Inc.  
#3000, 425 1st Street SW  
Calgary, AB T2P 3L8  
Phone 403-231-3948  
Fax 403-767-3863  
Email [karin.schmidt@enbridge.com](mailto:karin.schmidt@enbridge.com)





⊗ Digs	<b>Species At Risk</b>
<b>Depth of Cover</b>	Amphibian
▼ >= 0.6m	Bird
▼ < 0.6m	Fish
● KM Posts	Mammal
— Pipeline	Mollusc
— ROW	Reptile
— Class Limit	Plant
— Facilities	Lines
— Facility Buffers	10m Boundary
— Parcels	Federal
— Major Highways	Provincial
— Highway	Watercourse 50m
— Major Road	Rivers & Streams
— Local Road	Lakes & Rivers
— Ramp	Parks
— Railroads	Provinces & States
— Municipal	
— First Nations	
— Townships	
— Sections & Lots	

# Figure 1

Projection: Web Mercator

Map created in

